

FIGURE 12
NON-SPACER

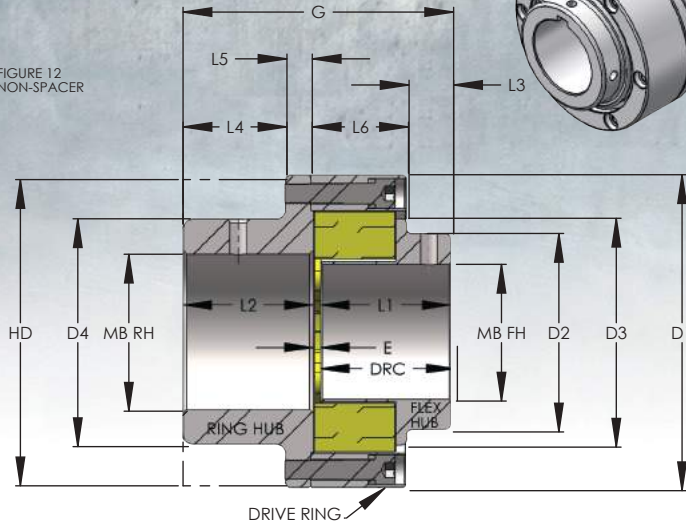
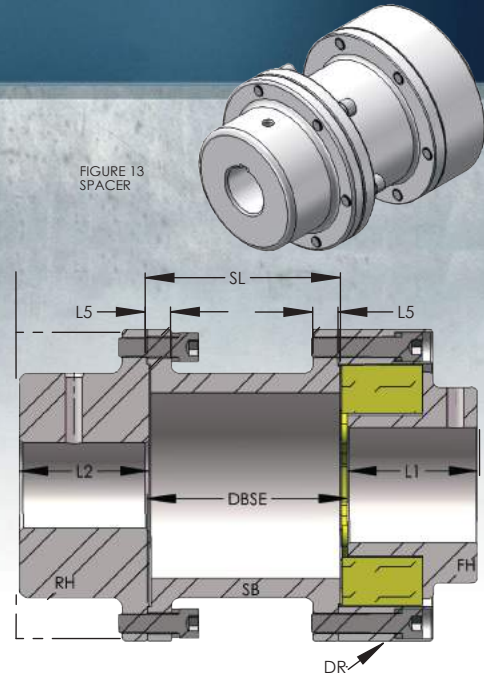


FIGURE 13
SPACER



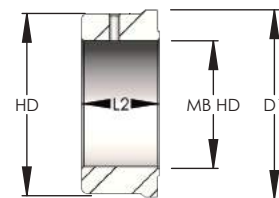
Non-spacer couplings are easily converted to Spacer Couplings simply by adding the spacer body. All other components are standard. Spacer Length (SL) = DBSE - E to allow proper gap. See Table 2 for standard stocked spacer lengths.

SIZE>	T-0	T-1	T-2	T-3	T-4	T-5	T-6	T-7	T-8	T-9	T-10	T-11	T-12
G	2.850	3.600	4.600	5.100	6.680	8.180	10.180	12.200	14.200	16.200	18.200	20.250	22.275
D1	2.950	3.960	4.800	6.290	7.800	9.765	11.900	13.600	14.625	18.020	19.950	23.250	28.500
MBFH	1.375	1.750	2.250	2.500	3.375	4.500	5.500	6.250	7.125	9.000	10.000	11.250	12.875
MBRH	1.625	2.250	2.500	3.375	3.875	5.250	6.250	7.250	7.625	10.375	12.000	12.500	15.000
MBHD	1.875	2.750	2.875	4.500	5.250	6.625	8.250	9.250	10.625	13.250	15.375	17.500	20.000
RSB	.300	.500	.600	.750	.950	1.000	1.500	1.750	2.250	2.900	3.700	3.900	3.900
E	.100	.100	.100	.100	.180	.180	.180	.200	.200	.200	.200	.250	.275
D2	1.995	2.585	3.200	4.000	4.900	6.500	7.875	9.250	10.167	12.775	14.625	16.000	18.500
D3	2.050	2.820	3.500	4.500	5.650	7.350	8.515	10.065	10.435	13.780	15.710	17.875	20.988
D4	2.470	3.200	3.625	5.000	5.625	7.500	8.875	10.750	11.375	13.875	16.500	17.500	22.875
HD	2.850	3.840	4.650	6.125	7.500	9.500	11.375	13.250	14.375	17.670	19.700	23.000	27.000
L1	1.375	1.750	2.250	2.500	3.250	4.000	5.000	6.000	7.000	8.000	9.000	10.000	11.000
L2	1.375	1.750	2.250	2.500	3.250	4.000	5.000	6.000	7.000	8.000	9.000	10.000	11.000
L3	.650	.705	1.200	1.125	1.115	1.325	2.475	2.485	3.250	3.875	4.140	4.250	4.900
L4	.980	1.295	1.730	1.825	2.565	3.065	3.940	4.925	5.690	6.440	6.875	7.900	8.440
L5	.375	.4375	.500	.625	.625	.875	1.000	1.125	1.250	1.500	2.000	2.000	2.500
L6	.835	1.165	1.165	1.500	2.375	2.875	2.715	3.795	3.900	4.385	5.185	6.100	6.375
DRC	1.450	2.085	2.500	2.700	4.250	5.175	4.865	6.815	7.140	8.010	9.570	11.100	11.675
S1	1.000	1.350	1.438	1.815	2.575	3.125	3.250	4.250	4.500	5.125	6.000	7.000	7.250
S2	.6875	.875	1.125	1.250	1.625	2.000	2.500	3.000	3.500	4.000	4.500	5.000	5.500
SS	5/16	5/16	3/8	3/8	1/2	5/8	3/4	1-8	1-8	1-8	1-8	1-8	1-8
LBS	5	10	15	25	50	105	180	285	365	600	950	1250	1750

Note: Size T-6 thru T-12 spacers are made to order. Special inventory arrangements can be made with the end user if needed. Consult Factory for Min/Max spacer lengths

SIZE	3.0	3.5	3.75	4.0	5.0	5.5	6.0	7.0	7.5	9.0	9.5	9.75	10.0	12.0
T-0	X	X	X											
T-1	X	X	X	X	X									
T-2	X	X	X	X	X	X	X	X	X					
T-3	X	X	X	X	X	X	X	X	X	X				
T-4		X	X	X	X	X	X	X	X	X	X	X	X	
T-5				X		X	X	X	X	X	X	X	X	X

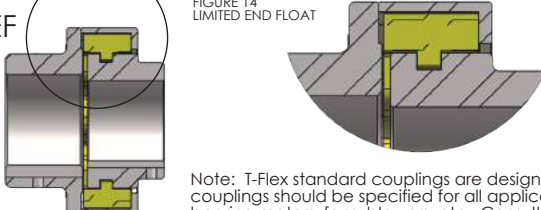
FIGURE 15
HEAVY DUTY RING HUB



MB HD: Use the Heavy Duty Ring Hub for shafts larger than MB RH. RH HD must be specified when ordering RSB for the larger shafts. Available for use with Spacer and Non-spacer Couplings

LEF

FIGURE 14
LIMITED END FLOAT



Note: T-Flex standard couplings are designed to allow free axial movement of driver and driven shafts. Limited End Float couplings should be specified for all applications requiring limited or controlled axial end float such as Sleeve/Babbit bearing motors, fans, blowers, etc. Consult factory for questionable applications. Limited End Float Flex Hub and Inserts are used with standard Ring Hubs and Drive Rings. Available for use with Spacer and Non-spacer Couplings.

ATR Sales Inc. reserves the right to change design without notice. The dimensions and weights listed are approximate and sufficient for most users. Dimensions L3 and L4 may be faced off as needed for length restrictions. (see page 12 for shaft contact) The purchaser should request certified prints for couplings requiring tighter tolerances, critical dimensions and/ or weights. Contact ATR Sales @ 800-443-6613