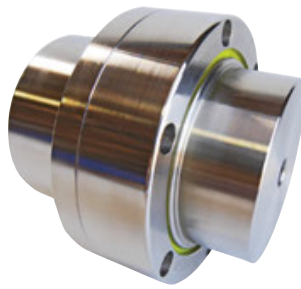


ATRA-FLEX®

Flexible Couplings

Since 1980, ATRA-FLEX has been a leader in the design, engineering and manufacturing of flexible shaft couplings for rotational equipment throughout the world. Our hands-on approach and impeccable customer service philosophy have set us apart from the rest. ATRA-FLEX flexible couplings are depended on by professionals in the most demanding industries, including pulp and paper, steel, oil and gas, mining, and dredging.

Industry leader in superior performance, ease of installation and maintenance, comprehensive technical support, customer service and short lead times on standard and custom designs.



Millennium® "M" Series

- No metal-to-metal contact; no need to replace hubs
- Easy "replace in place" design
- More internal support of insert, allowing higher HP in a smaller package vs. other similar styles
- Torque capacity up to 3,610,000 in-lb and up to 16" shafts
- Save on downtime costs with quick insert replacement and no lubrication

T-FLEX® Series

- No metal-to-metal contact; no need to replace hubs
- Same easy "replace in place" design with bolt-on ring
- Transmits up to 1,570,000 in-lb of torque and up to 20" shafts
- Uniquely combines the stability of a compression style coupling with the safety of a shear coupling
- Requires no lubrication, saving you on time-consuming and labor-intensive maintenance

Melonite Processing

Obtain optimal performance and service life with ATRA-FLEX's stainless steel alternative—an excellent option for any wet, damp or corrosive environments. This isn't a coating, but rather a ferritic nitrocarburizing process that hardens carbon steel up to a 57.6 RC. It won't chip, peel, or wear off, and adds more protection than your standard nickel plating.



atra-flex.com



Millennium® "M"
Series Selection Guide



T-FLEX®
Selection Guide



A Series®
Selection Guide