

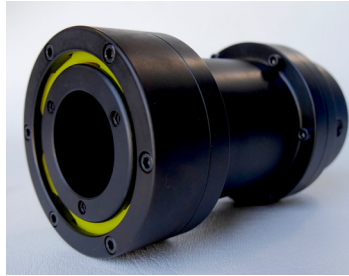
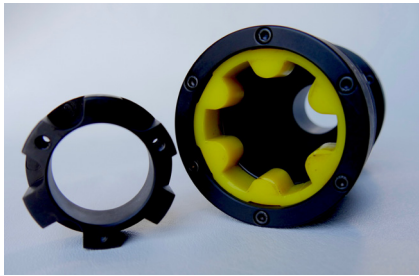
ATRA-FLEX®

Flexible Couplings



Looking for Cost Savings and Corrosion Resistance on your Toughest Applications? We continually strive to meet customers' needs.

Melonite™ Process offers a significant cost savings and alternative option to Stainless Steel. Melonite™ Process available in the complete ATRA-FLEX® Coupling Line.



ATRA-FLEX®
Flexible Couplings

Melonite™ Process
Cost Saving alternative to Stainless Steel

Corrosion and Wear Resistant to Chemicals and Harsh Environments

Providing Cost Saving Solutions Since 1980

www.atra-flex.com



- Increased surface hardness
- Lower coefficient of friction
- Enhanced surface lubricity
- Improved running wear performance
- Enhanced corrosion resistance
- API 610 Couplings available
- Suitable for damp, wash-down and chemical areas
- Proven in the field for harsh mining and aggregate applications
- Increased rotating fatigued strength and longer hub life in the event of misalignment or vibration
- Unlike nickel plating; MP Process diffuses small amounts of nitrogen, carbon and oxygen into the surfaces of the steel



Excellent value added on Mining, Pulp and Paper, Marine, Dredge, Aggregate, Forestry and Chemical plant applications

**** Suitable for food and processing (below food wash down areas) but is not FDA approved due to its black color.**

ATRA-FLEX® is proud to Offer MP. The MP stands for Melonite™ Process. This process is available as an option with our complete coupling line to provide corrosion and wear resistance. This process has been proven in the field to prevent corrosion caused from applications in wet or chemical environments as well as wear and fretting due to misalignment and vibration. It is a low cost alternative to stainless steel suitable for marine applications. Melonite is a thermo-chemical treatment for improving surface properties of metal parts. It exhibits predictable and repeatable results in the treating of carbon steels resulting in superior corrosion and wear properties as well as increasing rotating fatigue strength. During the process, which takes place between 900F and 1075F, the metal surface is enriched with nitrogen and carbon. A two-part nitride layer consisting of a monophasic compound layer and diffusion layer is formed. Total depth ranges from .008-.040". Hardness in the compound layer is increased to an average of 57.6 Rockwell C. The end result of this process creates a black matte finish.



www.atra-flex.com

ATR Sales Inc. Corporate Headquarters 110 E. Garry Ave. Santa Ana, Ca 92707
1800-443-6613

More innovative solutions from Tsubaki



**SEALED JOINT
CHAIN OPTIONS**



**BACKSTOPS &
OVERRUNNING
CLUTCHES**



**STEEL CABLE
CARRIERS**



**CONTINUOUS-
FLEX CABLES**



**SMART TOOTH®
SPROCKETS**



**TITAN™ SERIES
CHAINS**

EXCELLENCE THROUGH INNOVATION SINCE 1917

For over 100 years, Tsubaki has developed and manufactured the highest-quality products for power transmission and motion control. With a vast network of global production facilities, R&D resources and sales offices, Tsubaki remains committed to providing innovative solutions to customers' problems for the next 100 years.

ustsubaki.com



Corporate Headquarters
U.S. Tsubaki Power Transmission, LLC
301 E. Marquardt Drive
Wheeling, IL 60090
Tel: 800.323.7790



Roller Chain Division
821 Main St.
Holyoke, MA 01040
Tel: 800.323.7790



**Conveyor & Construction
Chain Division**
1010 Edgewater Drive
Sandusky, OH 44870
Tel: 800.537.6140



Sprocket Manufacturing
1630 Drew Road
Mississauga, ON L5S 1J6
Tel: 800.323.7790



**Cable & Hose
Carrier Division**
7100 W. Marcia Road
Milwaukee, WI 53223
Tel: 800.443.4216

Note: In accordance with the policy of U.S. Tsubaki Power Transmission, LLC to consistently improve its products, the specifications in this brochure are subject to change without notice. The logos, brand names or product names in this brochure are trademarks or registered trademarks of Tsubakimoto Chain Co. and its subsidiaries in Japan, the U.S. and other countries.