

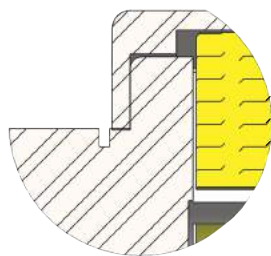
**DIMENSIONS - A-SERIES®**

SIZE (in inches)	A00	A0	A1	A2	A3	A4	A5	A6	A7	A8	A9	A11
EXTERNAL D1	1.80	2.50	3.15	4.25	5.56	7.00	8.900	10.625	12.400	14.45	16.925	20.00
TOTAL LENGTH G	2.10	2.79	3.56	4.83	5.98	6.99	8.61	10.19	12.19	14.19	16.22	20.10
MAXIMUM BORE d1	0.88	1.25	1.63	1.94	2.38	2.94	4.00	5.00	6.00	7.13	9.25	10.50
PILOT BORE	0.25	0.30	0.43	0.50	0.63	0.95	1.13	1.50	1.75	2.45	2.90	3.74
L	.765	1.06	1.34	1.775	2.13	2.40	3.07	3.750	4.57	5.36	6.225	7.450
d2	0.88	1.23	1.40	1.65	2.00	2.70	3.35	4.45	5.25	5.93	7.35	7.75
D2	1.35	1.995	2.37	3.07	3.52	4.36	5.79	7.25	8.00	9.50	11.00	13.00
D3	1.385	2.065	2.505	3.36	4.505	5.872	7.45	9.225	10.49	12.80	15.087	17.90
H	0.90	1.06	1.39	2.03	2.42	3.48	3.93	4.69	4.99	5.99	6.41	9.10
J	0.60	0.87	1.100	1.40	1.78	1.755	2.34	2.75	3.60	4.10	4.905	5.50
K	0.50	0.55	0.88	1.25	1.63	2.03	2.310	2.750	3.00	3.35	3.750	5.00
E (GAP)	0.047	0.062	0.062	0.062	0.062	0.188	0.188	0.188	0.188	0.188	0.219	0.100
APPROX WT (LBS)	0.78	2.24	4.00	9.26	17.00	33.18	67.68	115.00	175.00	308.00	456.00	770.00

Note: on Heavy Duty (maximum bore) hubs - D2 will be same as D3

**A-Series® Floater Couplings**

FIGURE 27 FLOATER SNAP



FLOATER SNAP

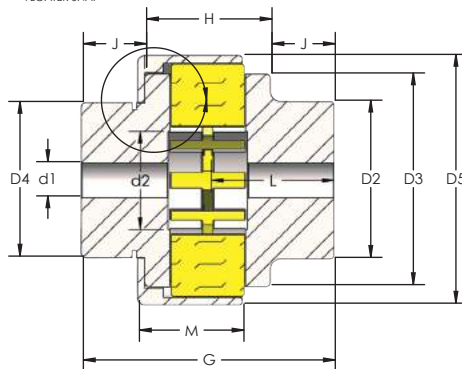
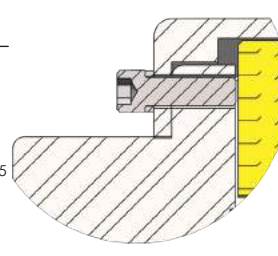
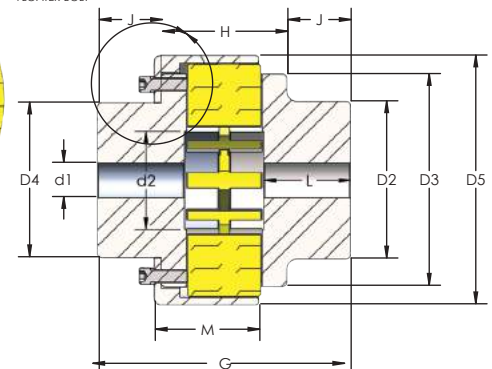


FIGURE 28 FLOATER BOLT



FLOATER BOLT



**DIMENSIONS - A-SERIES® FLOATER**

SIZE (in inches)	A00	A0	A1	A2	A3	A4	A5	A6	A7	A8	A9	A11
EXTERNAL D5	N/A		3.150	4.250	5.600	6.950	8.750	10.750	12.250	14.375	16.835	
TOTAL LENGTH G	2.10	2.79	3.56	4.83	5.98	6.99	8.61	10.19	12.19	14.19	16.22	20.10
MAXIMUM BORE d1	0.88	1.25	1.63	1.94	2.38	2.94	4.00	5.00	6.00	7.13	9.25	10.50
PILOT BORE	0.25	0.30	0.43	0.50	0.63	0.95	1.13	1.50	1.75	2.45	2.90	3.74
L	0.78	1.06	1.34	1.78	2.13	2.40	3.07	3.70	4.57	5.36	6.17	7.75
d2	0.88	1.23	1.40	1.65	2.00	2.70	3.35	4.45	5.25	5.93	7.35	7.75
D2	1.35	2.00	2.37	3.07	3.52	4.36	5.79	7.25	7.80	9.50	11.00	13.00
D3	1.39	2.07	2.51	3.36	4.51	5.87	7.45	9.25	10.49	12.80	15.09	17.90
H	0.90	1.06	1.39	2.03	2.42	3.48	3.93	4.69	4.99	5.99	6.41	9.10
J	0.60	0.87	1.09	1.40	1.78	1.76	2.34	2.75	3.60	4.10	4.91	5.50
M	N/A		1.336	1.425	2.400	2.900	3.300	4.000	4.625	5.100	5.600	
E (GAP)	0.047	0.062	0.062	0.062	0.062	0.188	0.188	0.188	0.188	0.188	0.219	0.100
APPROX WT (LBS)	0.78	2.24	4.00	9.26	17.00	33.18	67.68	115.00	175.00	308.00	456.00	770.00

ATR SALES INC. reserves the right to change design without notice. The dimensions and weights listed are approximate and sufficiently accurate for most users. The purchaser should use certified prints for construction where exact dimensions and weights are critical. Additional information will be provided if extreme accuracy is required.