

**CONVERT YOUR GREASE LUBRICATED GRID SPACER COUPLING WITH  
THE ADVANTAGE OF NON-LUBRICATED LOW MAINTENANCE ATRA-FLEX**

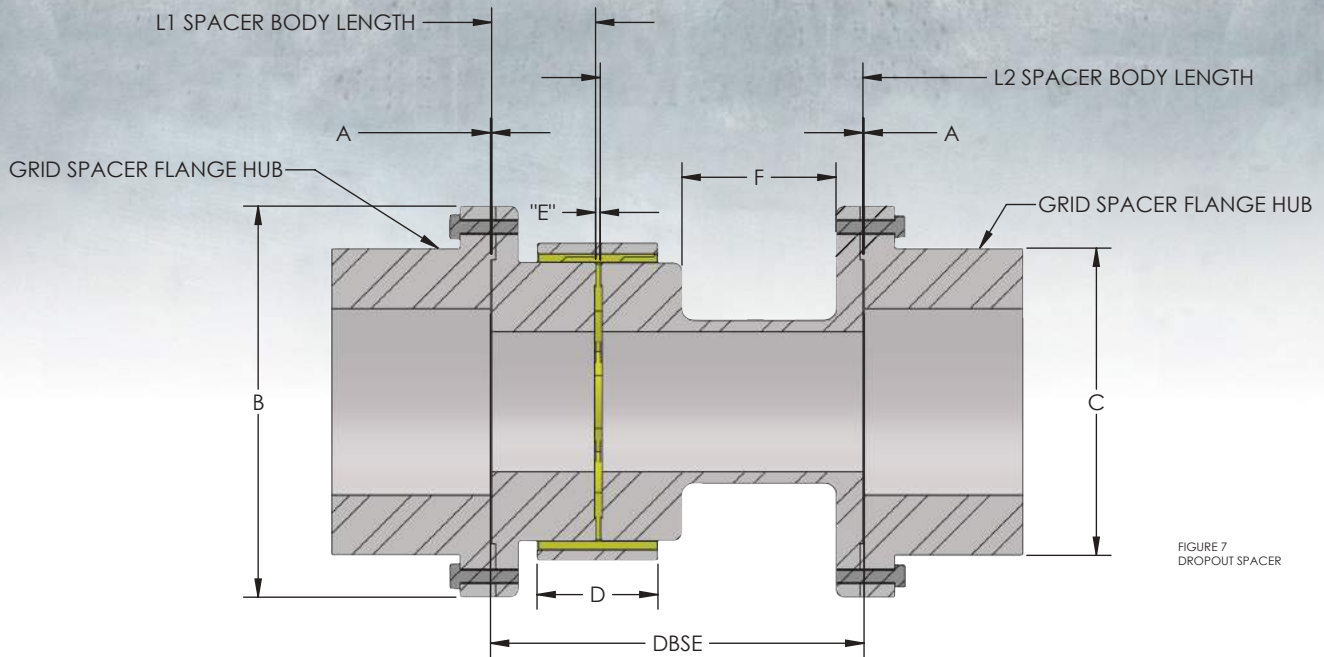


FIGURE 7  
DROPOUT SPACER

**DIMENSIONS GRID DROP-OUT CONVERSION CHART**

GRID SIZE	SIZE ATRA-FLEX	ANSI STD DBSE	A	B	C	D (RING WIDTH)	F	"E"	L1	DBSE/ =L2	G (BC)
1020 T31	20SB0MF	3.5 4.380 5.00	.050	3.300	2.060	1.145	1.700 2.580 3.200	.075	0.900	3.500 = 2.600 4.380 = 3.480 5.000 = 4.100	2.835
1030 T31	30SB1MF	3.5 4.380 5.00 7.250	.050	3.618	2.340	1.57	0.900 1.780 2.400 4.650	.075	1.300	3.500 = 2.200 4.380 = 3.080 5.000 = 3.700 7.250 = 5.950	3.110
1040 T31	40SB2MF	3.5 4.380 5.00 7.250	.050	4.375	3.090	1.600	0.700 1.580 2.200 4.450	.075	1.400	3.500 = 2.100 4.380 = 2.980 5.000 = 3.600 7.250 = 5.850	3.898
1050 T31	50SB2MF	4.380 5.00 7.250	.050	4.875	3.440	1.600	1.580 2.200 4.450	.075	1.400	4.380 = 2.980 5.000 = 3.600 7.250 = 5.850	3.898
1060 T31	60SB3MF	5.00 7.250 9.750 12.250	.050	5.690	4.060		1.05 3.300 5.800 10.275	.075	1.975	5.000 = 3.025 7.250 = 5.275 9.750 = 7.775 12.250 = 10.275	4.900
1070 T31	70SB4MF	5.00 7.250 9.750 12.250	.050	.000	4.310	3.100	0.900 3.150 5.050 8.150	.200	2.1	5.000 = 2.800 7.250 = 5.050 9.750 = 7.550 12.250 = 10.050	5.275
1080 T31	80SB5MF	7.250 9.750 12.250	.050	7.000	4.800	3.500	1.350 3.850 6.350	.200	3.075	7.250 = 4.175 9.750 = 6.675 12.250 = 9.175	6.000
1090 T31	90SB5MF	7.250 9.750 12.250	.050	8.250	5.620	3.500	1.350 3.850 6.351	.200	3.075	7.250 = 4.175 9.750 = 6.675 12.250 = 9.175	6.000

\*\* Refer to horsepower capacity at various RPM on page 4 and page 18  
\*\*\* Consult factory for larger sizes