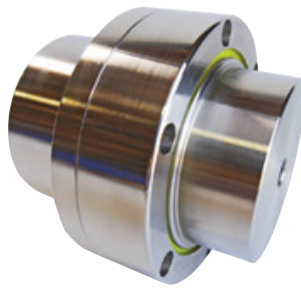


# ATRA-FLEX®

## Flexible Couplings

Since 1980, ATRA-FLEX has been a leader in the design, engineering and manufacturing of flexible shaft couplings for rotational equipment throughout the world. Our hands-on approach and impeccable customer service philosophy have set us apart from the rest. ATRA-FLEX flexible couplings are depended on by professionals in the most demanding industries, including pulp and paper, steel, oil and gas, mining, and dredging.

**Industry leader in superior performance, ease of installation and maintenance, comprehensive technical support, customer service and short lead times on standard and custom designs.**



### Millennium® "M" Series

- No metal-to-metal contact; no need to replace hubs
- Easy "replace in place" design
- More internal support of insert, allowing higher HP in a smaller package vs. other similar styles
- Torque capacity up to 3,610,000 in-lb and up to 16" shafts
- Save on downtime costs with quick insert replacement and no lubrication

### T-FLEX® Series

- No metal-to-metal contact; no need to replace hubs
- Same easy "replace in place" design with bolt-on ring
- Transmits up to 1,570,000 in-lb of torque and up to 20" shafts
- Uniquely combines the stability of a compression style coupling with the safety of a shear coupling
- Requires no lubrication, saving you on time-consuming and labor-intensive maintenance

### Melonite Processing

Obtain optimal performance and service life with ATRA-FLEX's stainless steel alternative—an excellent option for any wet, damp or corrosive environments. This isn't a coating, but rather a ferritic nitrocarburizing process that hardens carbon steel up to a 57.6 RC. It won't chip, peel, or wear off, and adds more protection than your standard nickel plating.



[atra-flex.com](http://atra-flex.com)



Millennium® "M"  
Series Selection Guide



T-FLEX®  
Selection Guide



A Series®  
Selection Guide