

# ATRA-FLEX®

## Flexible Couplings



Providing Coupling Solution's for your Rotating Equipment,  
Misalignment, End Float and Vibrational Problems Since 1980

### ATRA-FLEX® Millennium®



- T-Slot design on insert for lock on ring
- No Lubricants or service required=NO EPA REGULATIONS, LESS DOWNTIME and SAVES MONEY
- M Series® design offers more "Internal Support" of Insert for Higher Horse Power
- Higher Horse Power in a Smaller Package vs. knockoff designs
- Very Economical
- Shear Protection
- No Exposed Shaft on Spacer Coupling
- Shaft Capacities up to 16,000
- Torque Ratings up to 3,610,000 (lb-in) Transmits more torque than similar elastomeric style couplings
- Easy "Replace in Place" insert = No moving hubs or equipment =LESS DOWNTIME!

### ATRA-FLEX® Original A-Series® We Innovated, Others Followed



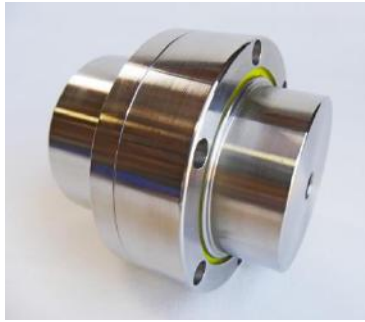
- No lubrication =no EPA regulations, less downtime and saves on overall maintenance expenses.
- Low reaction forces
- More dampening than grid,gear and disc pack couplings extending the life of your equipment
- Shear protection
- Very economical
- Shaft capacities up to 10,5000
- Torque ratings up to 570,000 (lb-in)
- Accommodates for Parallel, Angular and Axial Misalignment
- Easy "Replace in Place" insert + no moving hubs or equipment =Less downtime



*All Coupling styles available in  
corrosion resistant, cost saving  
alternative to stainless steel,  
Melonite™ Process*



*Multiple insert options:  
Standard, high torque,  
extra dampening and  
high heat that can  
accommodate up to 350° F*



## T-Flex® uniquely combines the stability of a compression type coupling with the safety of a shear coupling

- Severe Duty, Higher Performance Coupling
- No Lubricants or service required =NO EPA REGULATIONS, LESS DOWNTIME and SAVES MONEY
- Bolt on Ring
- Absorbs Extreme Torsional Shock and Vibration
- Suitable for Horizontal and Vertical Use, Reversing and Start-Stop Applications
- Generates less Reactionary Loads, no axial thrust which significantly Increases Bearing Life
- Shaft Capacities up to 20.000
- Torque Ratings up to 1,570,000 (lb-in)
- Easy "Replace in Place" insert = NO MOVING HUBS or REALIGNMENT =LESS DOWNTIME!

## ATRA-FLEX® Quality Couplings Manufactured in USA



All ATRA-FLEX Hubs are 100 percent machined from solid bar and tubing, making them more intrinsically balanced which provides smoother running equipment, less vibration, which will extend the life of your equipment. When our urethane inserts shear, there is no metal to metal contact and no need to move your equipment. You simply remove outer ring and quickly replace new insert.

**Options available:** Stainless Steel: grades 303,304, and 316

**Melonite™ Process:** Low cost, alternative to stainless steel .This process is ideal for wet, humid or corrosive environments. It gives our carbon steel a uniform case hardening up to 57.6 RC and significantly prevents wear and corrosion. Many of our customers have standardized on MP. Carbon Steel is easier to machine (bore) than stainless and its a stronger material with lower overall cost of ownership.

**Coupling Types Available:** Close coupled, Spacer, Drop Out spacer, Limited End Float, Slide, Floating Shafts, Flywheel, Brake Wheel, Brake Disc, and made to order engineered couplings.

## Solving Customer's Needs is our Focus, Customization and Timely Delivery is Our Strength

Recognized in the industry for providing knowledgeable technical support and exceptional customer service. We have the ability to meet your standard and custom order needs in record times in order to lower your overall "downtime" expenses.

ATR Sales Inc. Corporate Headquarters  
110 E. Garry Ave. Santa Ana, CA 92707  
Ph: 800-988-9896



Auto sizing program available  
[www.atra-flex.com](http://www.atra-flex.com)



A Series®



M Series®



T-FLEX®

Selection guides